



**Shizuoka University**

**Asia Bridge Program : ABP**



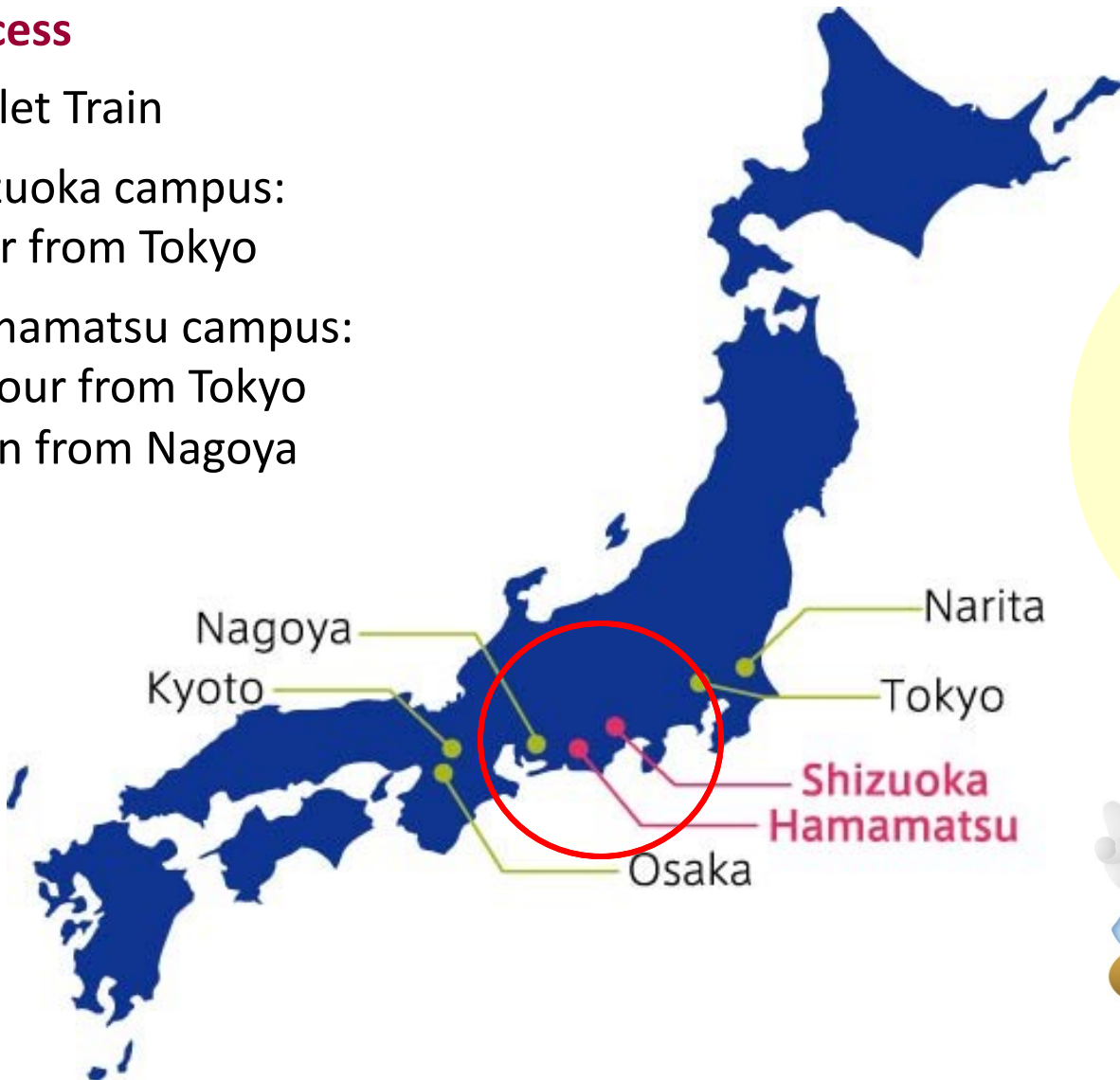
# Where we are

## ■ Access

By Bullet Train

○ Shizuoka campus:  
1 hour from Tokyo

○ Hamamatsu campus:  
1.5 hour from Tokyo  
30min from Nagoya



We are located in the heart of Japan !



Campus Mascot (Shizuppi)



# Outline of Shizuoka University

## ■ Faculties: 6

Humanity & Social Sciences, Education,  
Science, Agriculture, Engineering, Informatics

## ■ Graduate Schools

Master's course 6

Doctoral course 2

Professional Degree Course 2

## ■ Research Institutes: 2

Electronics, Green Science and Technology

## ■ Students: Total: about 10,500

Undergraduate 8,600

Graduate (Master) 1,410

Graduate (Doctor) 237

Graduate (Professional) 49

International Students 430

## ■ Staff: 1,160



Shizuoka Campus



Hamamatsu Campus

(As of May 1, 2018)



## English-based degrees

Undergraduate Faculty	Master's degree Graduate School	Doctoral degree Graduate school
Engineering	<u>Graduate school of Integrated Science and Engineering</u> Department of <ul style="list-style-type: none"> <li>• Engineering</li> <li>• Science</li> <li>• Informatics</li> <li>• Agriculture</li> </ul>	Graduate school of science and Technology
Science		
Informatics		
Agriculture		
Humanities and Social Sciences	Graduate school of Humanities and Social Sciences	
Education	Graduate school of Education	Unified Graduate school with Aichi University of Education



# Asia Bridge Program

75% of Shizuoka Companies who expands overseas have their branches in Asia

Demands for Human resources with a combination of technical expertise and business sense

Lack of human resources abroad who has high Japanese proficiency and technological knowledge

Japanese students to get training abroad

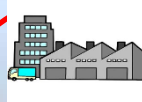
★ To learn management & technology in English and in Japanese

Practice-oriented Education

★ Tie-up with local industry to deliver joint education program

Cultivation of Community-minded human resources

Japanese companies' branches in Asia



India

Thailand

Indonesia



Companies in Shizuoka



Vietnam

-Recruit international students in cooperation with Japanese companies' branches in Asia  
-Training at factories and offices in Japan

○ Train hybrid Asian international students who acquire Japanese language skills and knowledge of Japanese technology to be active at Japanese companies' oversea business

○ Learning together with international students, Japanese students gain global capabilities which would help them to be active in the business in Asian countries

○ To develop individuals with a humanities background who has technological knowledge. To develop individuals with a scientific background who understands business.



Shizuoka  
University

Asia  
Bridge  
Program

- I. Extensive Financial Support
- II. Industry Link
- III. International Admissions



# Asia Bridge Program

## Bachelor's Degree

Faculty of  
Humanities & Social  
Sciences  
Education  
Informatics  
Science  
Engineering  
Agriculture

## Master's Degree

Integrate Graduate School of  
Science & Technology  
  
Informatics  
Science  
Engineering  
Agriculture

## International Students

**40** students  
to study in **Japanese**

**40** students  
to study in **English**

# Full tuition scholarship for Asian students

Shizuoka  
University  
Asia  
Bridge  
Program







Shizuoka  
University

Asia  
Bridge  
Program

## Undergraduate program

## 学士課程プログラム



## Bachelor's Degree

Faculty of

**Humanities & Social Sciences**

**Education**

**Informatics**

**Science**

**Engineering**

**Agriculture**

*40 international students from 5 countries  
to study in Japanese*

# Tuition Scholarship available for

## Bachelor's courses :

- India
- Thailand
- Vietnam
- Indonesia
- Myanmar**



# Scholarships and Tuition Fees

1 <sup>st</sup> year	Examination fee (one time)	Enrollment fee (one time)	Tuition fee (every year)
ABP-SU students	<b>Free</b>	<b>Free</b>	<b>Full Tuition Scholarship</b>
Privately funded international students	¥17,000	¥282,000	¥535,800

- ✓ Financial funds worth ¥ 834,800 (8,300 USD)
- ✓ No fee for the 1<sup>st</sup> year of the study
- ✓ No fee for the continuing years (2<sup>nd</sup>, 3<sup>rd</sup> and 4<sup>th</sup>=final year)  
as long as student can maintain his/her performance



## Scholarships and Tuition Fees

2nd year

ABP-SU  
students

Privately  
funded  
international  
students

**Full Tuition Scholarship or  
Half Tuition Scholarship offered  
according to the academic  
performance of 1<sup>st</sup> year**

¥535,800

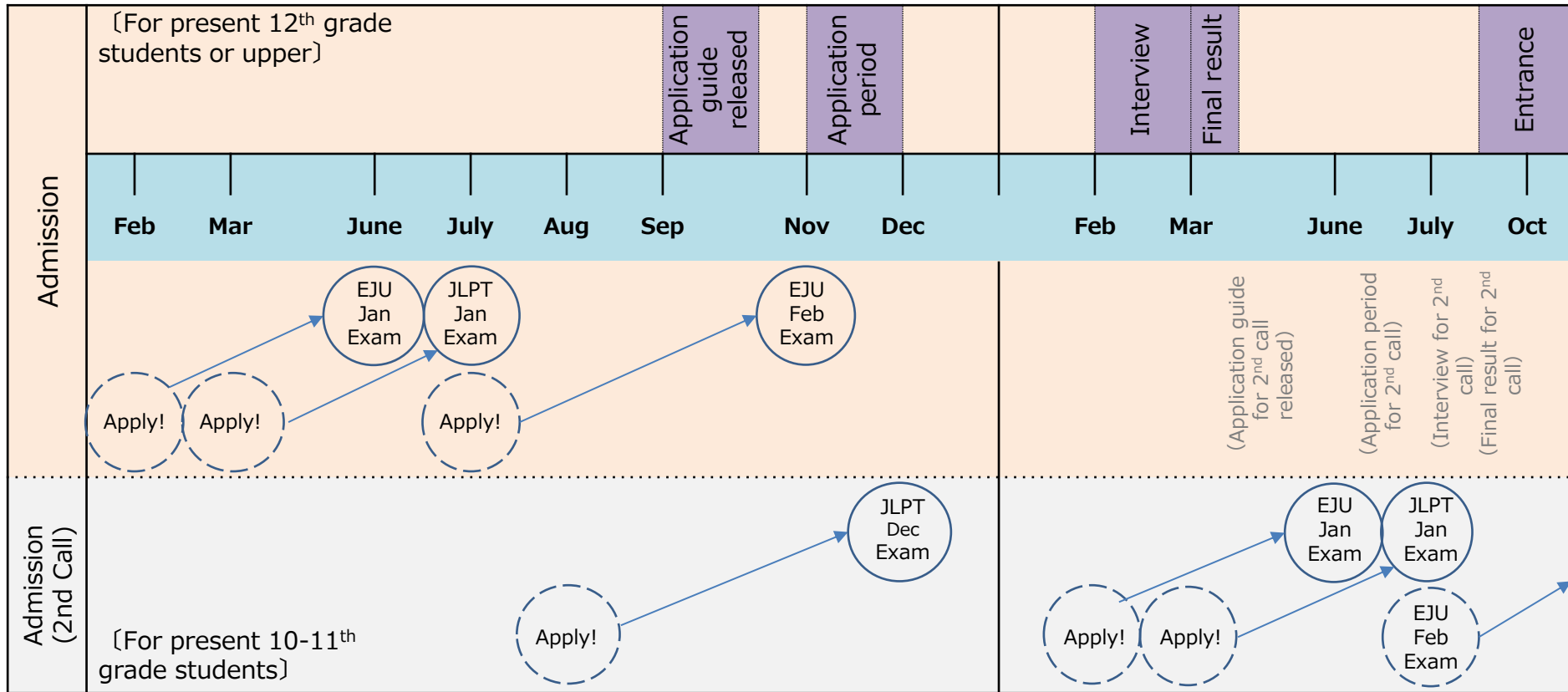
- ✓ National Univ. costs ½ of Private Univ. in Japan
- ✓ Living Cost in Shizuoka : about ¥80,000 (USD800/ month)

- October Enrollment
- Entrance examination in home country and Japan
- Free of entrance examination fee, entrance fee and tuition fee for the 1st year of study
- Full/half tuition reduction for the rest of study
- Scholarship support to all foreign ABP students
- Internship of ABP students in sponsor Japanese companies

## What you need

- 1.EJU** (Examination for Japanese University)
- 2.JLPT** (Japanese Language Proficiency Test)  
#around N4-N3
- 3.TOEFL-iBT, TOEIC-L&R or IELTS** academic module
4. Your **12<sup>th</sup> Certificate** and submit online application as per rules

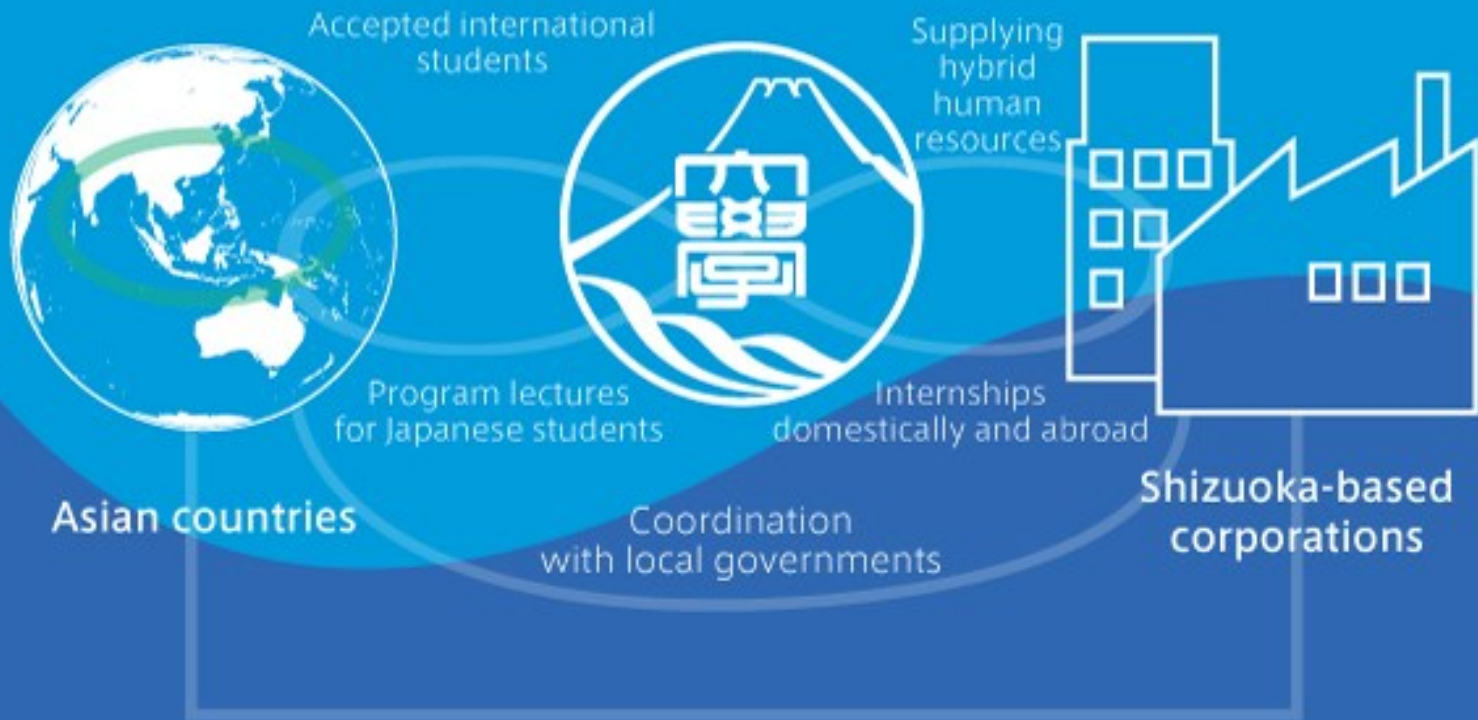
# ABP Admission Schedule



● In addition, scores of English tests (TOEFL-iBT, TOEIC-L&R or IELTS-AM) is required to submit upon application.



# Outstanding **career opportunities** provided by Industry-Academia-Government Collaboration





- TOYOTA
- SUZUKI
- DENSO
- Yamaha Motor
- Mitsubishi Electric
- SONY EMCS
- Canon
- Fujitsu
- NEC Engineering
- Panasonic
- AISHIN
- TOSHIBA
- KOITO
- Hitachi
- Dow Chemical

**Significant number of Shizuoka Univ. Alumni  
working in the major companies in Tokai area  
i.e. YAMAHA, SUZUKI, HONDA & DENSO,,.**

### **Local Business will provide;**

- Internships
- Lecturers for ABP courses
- Scholarships
- Advise to the administration of ABP



### 【Pre-departure】

- Mabuchi International Scholarship Foundation 1 yr.
- MEXT Honors Scholarship for Privately Financed Inter.Students

### 【While studying in Japan】

- MEXT Honors Scholarship for Privately Financed Inter. Students
- Mitsui DuPont Fluor chemicals
- JGCS Scholarship Foundation
- Sato Yo International Scholarship Foundation
- Mitsubishi Corporation International Scholarship
- SHIZUGIN Asia Scholarship (2 yrs.)
- ENKEI Scholarship Foundation (1 yr.)
- Kyoritsu Foundation Scholarship (2 yrs.)
- Honda Benjiro Shogaku Kikin (up to 3 yrs.)
- Shizuoka University International Foundation

# ASIA BRIDGE PROGRAM

Today Shizuoka, Tomorrow the World

入試情報 / Admissions Information



## News

LIST

### Undergraduate Admissions

2017.11.08

ABP Bachelor's Program Online

### Undergraduate Admissions

2017.09.01

Application Guide for the

### Undergraduate Admissions

2017.09.01

Announcement of Successful

### Undergraduate Admissions

2017.07.07

2nd Call (Bachelor's Program)



# Accommodations



International Residence

Akebono Dormitory

## Attention:

- ✓ As an English certificate,  
the official institutional program test score report like TOEFL-ITP, TOEIC-IP, IELTS general training module **will be rejected**.
- ✓ As a Japanese certificate,  
Score report of JLPT **will be accepted** as an supplementary score.

# What is EJU?

## 日本留学試験とは？

- The Examination for Japanese University Admission for International Students (EJU) is used to evaluate whether international students who wish to study at the undergraduate level at universities or other such higher educational institutions in Japan possess the Japanese language skills and the basic academic abilities needed to study at those institutions.



# What is EJU ?

## 日本留学試験とは？

- EJU is composed of four subject tests: Japanese as a Foreign Language, Science (Physics, Chemistry, and Biology), Japan and the World, and Mathematics. Examinees taking the Science test must select two of the three categories (Physics, Chemistry, and Biology), and those taking the Mathematics test select one of two course options.

# What is EJU ?

## 日本留学試験とは？

- EJU is administered by Japan Student Services Organization (JASSO) under the direction of Ministry of Education and Science of Japan.
- For details, access to the following url address:  
<http://www.jasso.go.jp/en/eju/examinee/procedure/index.html>

## Science—2

**A** In the International System of Units (SI), length [m], mass [kg], time [s] and electric current [A] are used as a part of base units.

Q1 How would units of pressure and electric resistance be expressed with combinations of the aforementioned base units? From ①-⑥ below choose the correct answer. 1

	Pressure	Electric resistance
①	$[\text{m}^{-1} \cdot \text{kg} \cdot \text{s}^{-2}]$	$[\text{m}^2 \cdot \text{kg} \cdot \text{s}^{-2} \cdot \text{A}^{-2}]$
②	$[\text{m}^{-2} \cdot \text{kg} \cdot \text{s}^{-2}]$	$[\text{m}^2 \cdot \text{kg} \cdot \text{s}^{-2} \cdot \text{A}^{-2}]$
③	$[\text{m}^{-1} \cdot \text{kg} \cdot \text{s}^{-2}]$	$[\text{m}^2 \cdot \text{kg} \cdot \text{s}^{-3} \cdot \text{A}^{-2}]$
④	$[\text{m}^{-2} \cdot \text{kg} \cdot \text{s}^{-2}]$	$[\text{m}^2 \cdot \text{kg} \cdot \text{s}^{-3} \cdot \text{A}^{-2}]$
⑤	$[\text{m}^{-1} \cdot \text{kg} \cdot \text{s}^{-2}]$	$[\text{m}^2 \cdot \text{kg} \cdot \text{s}^{-4} \cdot \text{A}^{-2}]$
⑥	$[\text{m}^{-2} \cdot \text{kg} \cdot \text{s}^{-2}]$	$[\text{m}^2 \cdot \text{kg} \cdot \text{s}^{-4} \cdot \text{A}^{-2}]$

Mathematics—2

I

Q 1 Consider the equation

$$(x - 1)^2 = |3x - 5|. \quad \dots\dots\dots \textcircled{1}$$

(1) Among all solutions of equation  $\textcircled{1}$ , the solutions satisfying  $x \geq \frac{5}{3}$  are  $x = \text{A}$  and  $x = \text{B}$ , where  $\text{A} < \text{B}$ .

(2) Equation  $\textcircled{1}$  has a total of  $\text{C}$  solutions. When the minimum one is denoted by  $\alpha$ , the integer  $m$  satisfying  $m - 1 < \alpha \leq m$  is  $\text{DE}$ .

Q1 Read the following conversation and answer questions (1)–(4) below.

Teacher : US President Barack Obama received the 1 Nobel Peace Prize in 2009, in recognition of his vision of and work for a world without nuclear weapons.

Yoshiko : 2 As a country that has suffered nuclear attacks, Japan strongly welcomes the movement toward nuclear disarmament.

Teacher : That's true. The international community needs to sustain the 3 framework for international cooperation toward nuclear disarmament, and step up efforts to implement it.

Yoshiko : There should also be efforts to pursue 4 disarmament of other types of weapons as well.

(1) With reference to underlined phrase 1, in 1995 a certain organization, like President Obama, received the Nobel Peace Prize for its efforts to eliminate nuclear weapons. From ①–④ below choose the answer that correctly identifies that organization.

1

- ① Greenpeace
- ② International Committee of the Red Cross
- ③ Bandung Conference
- ④ Pugwash Conference

# Restriction by Ministry of Education for Foreign Student Application

- Applicants must have spent no longer than three years of total time enrolled in junior high school and senior high school located in Japanese territory to be eligible to apply as a foreign student.
- Student VISA is recommended for all foreign student enter to Japan to enjoy government policy like JASSO scholarships...



# Hamamatsu campus & international students (Undergrad.)





Shizuoka  
University

Asia  
Bridge  
Program

## Master's degree program

## 修士課程プログラム





## Master's Degree

Graduate School of Integrate Science & Technology

Informatics

Science

Engineering

Agriculture

*40 international students from 16 countries  
to study in English*

# Asia Bridge Program: Master's level

Tuition Support  
& ABP Scholarship

Japanese Language  
Training

16 countries  
of Asia



Japanese Global  
Companies

Industry-Academia  
Collaborative Classes

Internships



# Tuition Scholarship available for

## Master's courses:

China, Taiwan, South Korea, Bangladesh, India, Nepal, Sri Lanka, Indonesia, Laos, Malaysia, Mongol, **Myanmar**, Philippines, Singapore, Thailand & Vietnam



# Scholarships and Tuition Fees

1 <sup>st</sup> year	Examination fee (one time)	Enrollment fee (one time)	Tuition fee (every year)
ABP-SU students	<b>Free</b>	<b>Free</b>	<b>Full Tuition Scholarship</b>
Privately funded international students	¥17,000	¥282,000	¥535,800

- ✓ **Financial funds worth ¥ 834,800 (8,300 USD)**
- ✓ **No fee for the 1<sup>st</sup> year of the study**



# Scholarships and Tuition Fees

2nd year

ABP-SU  
students

Privately  
funded  
international  
students

**Full Tuition Scholarship or  
Half Tuition Scholarship offered  
according to the academic  
performance of 1<sup>st</sup> year**

¥535,800

- ✓ National Univ. costs ½ of Private Univ. in Japan
- ✓ Living Cost in Shizuoka : about ¥80,000 (USD800/ month)



**Courses :** Integrated graduate school of science & Technology

- **M.Inf.** in Informatics
- **M.Sc.** in Mathematics/ Physics/ Chemistry/ Biological Science/ Geosciences
- **M.Eng.** in Mechanical Engineering/ Electrical & Electronic Engineering/Electronics and Materials Science/ Applied Chemistry & Biochemical Engineering/ Mathematical & Systems Engineering/ Management of Business Development
- **M.Ag.** in Biological and Environmental Science/ Applied Biological Chemistry/ Environment & Forest Resources Science



# ABP-SU Graduate: Master's degree (2 years)

## Science/Engineering/ Informatics/ Agriculture Education

Specialist  
subjects

ABP-SU  
modules

Japanese  
lessons

## Research Work

Laboratory  
work

Research  
Project

Dissertation

## Career Support

Career  
guidance

Internship

Meeting  
with Industry



## 1. Find a prospective academic supervisor

- Provide transcript, research background information
- List of Professors online ([ABP Website](#))
- Check Professor's research & publication

Until  
Feb/March

## 2. Receive the Acceptance letter from your prospective supervisor

By the end  
Of March

## 3. Online Application : Submit documents

April/ May

## 4. Skype Interview Test

✓ Application guide will be up on ABP Website in January





## Other Scholarships

### 【Pre-departure】

- Mabuchi International Scholarship Foundation 1 yr.
- MEXT Honors Scholarship for Privately Financed Inter.Students

### 【While studying in Japan】

- MEXT Honors Scholarship for Privately Financed Inter. Students
- Mitsui DuPont Fluor chemicals
- JGCS Scholarship Foundation
- Sato Yo International Scholarship Foundation
- Mitsubishi Corporation International Scholarship
- SHIZUGIN Asia Scholarship (2 yrs.)
- ENKEI Scholarship Foundation (1 yr.)
- Kyoritsu Foundation Scholarship (2 yrs.)
- Honda Benjiro Shogaku Kikin (up to 3 yrs.)
- Shizuoka University International Foundation



# Hamamatsu campus





# Accommodation **guaranteed** for 1<sup>st</sup> year



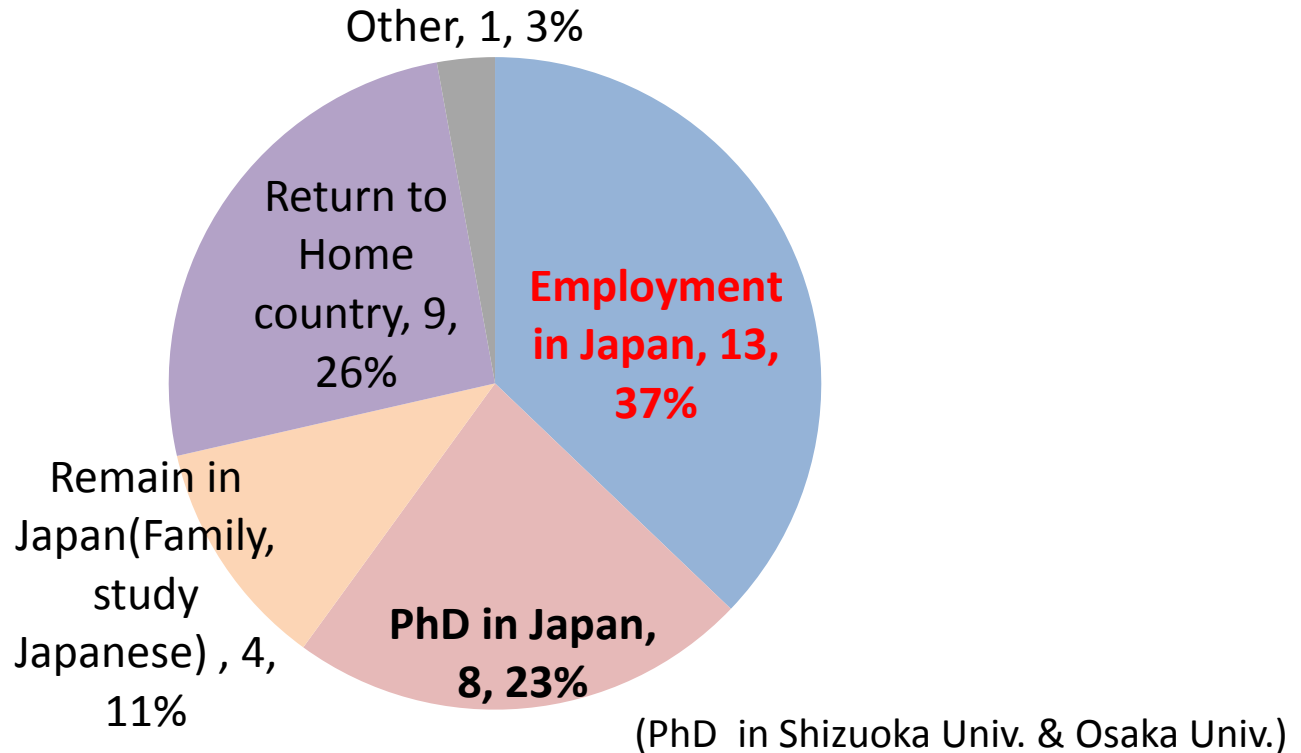
International Residence

Akebono Dormitory



## Shizuoka ABP Master's graduate Career destination: 2018

### 2018 Graduates (N.35)



# Job offered to ABP Master's: companies based in Japan

	Japan	Shizuoka
2017	<ul style="list-style-type: none"><li>• Toyota Motor Co.</li><li>• Toshiba Electronic Devices &amp; Storage (3)</li><li>• Toshiba Career</li><li>• Renasas Electrnics</li><li>• Sharp</li><li>• CCI</li></ul>	<ul style="list-style-type: none"><li>• Yamaha Motor Co. (2)</li><li>• Suzuki Motor Co.</li><li>• Maruyama Tea products Co.</li><li>• Creative Technology Inc.</li><li>• Koito manufacturing Co. (2)</li><li>• Chuo Hatsumei Institute Co.</li><li>• Yataro Co.</li></ul>
2018	<ul style="list-style-type: none"><li>• Nissan</li><li>• Mitsubishi Chemical Engineer.</li><li>• Hitachi High Technology</li><li>• Advics</li><li>• Molex Japan</li><li>• Toshiba Electronic Devices &amp; Storage</li><li>• Toshiba Digital Solutions</li><li>• Pharma Foods (PFI)*</li></ul>	<ul style="list-style-type: none"><li>• Yamaha Motor Co. (3)</li><li>• Systemics</li><li>• Yamamoto Tax office</li><li>• Chubu Plastic</li></ul>

All the graduates who went to work in a company in Japan were Engineering or Informatics major, except for one agriculture major student graduated in 2018\*.

# ABP graduate working in Japan

## Shizuoka University international students having success in Japan

---

Asia Bridge Program, master's degree, 2017 graduate

**Andre Sitompul** (Indonesia)

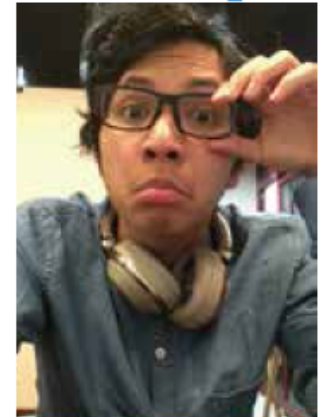
Everything started back in 2014 when I began my solo trip to the land of the rising sun, Japan. Unlike most of the young people who become interested in Japan through anime, manga, and other aspects of pop culture, I gained my interest in Japan through travelling.

Amazed and astonished by the super high-tech transportation and the hospitality I received during my short trip in Japan, I was intrigued to pursue my master's degree in Japan.

The opportunity came from Shizuoka University's Asia Bridge Program, which offers full scholarships to study in Japan. Without any hesitation, I applied for the program and got accepted!

I spent a wonderful two-year during my studies at Shizuoka University. I made wonderful friends, worked in a cool laboratory, and found abundant support for my career. Shizuoka University helps me a lot with my current career. Thanks to the university, I am working with one of the biggest motor manufacturing companies in Japan, Yamaha Motor Company.

With Yamaha, I have been given a chance to work in Yamaha Robotics, and I am developing a controller for factory automation. Well, to be honest, it's not always rainbows and butterflies, since I need to "fight" for my place here and show that I am the man for the job. I never work a day without learning new things, and I learned a lot in my first year of working for a Japanese company. I believe this experience could help me in building my personality and getting me ready to become a professional engineer and a global leader.





国立大学法人

静岡大学

National University Corporation

Shizuoka University

## ■ CONTACT

Shizuoka University

Organization for International Collaboration

E-mail: [global@adb.shizuoka.ac.jp](mailto:global@adb.shizuoka.ac.jp)



Shizuoka  
University

Asia  
Bridge  
Program

# Shizuoka & University

# 静岡と大学





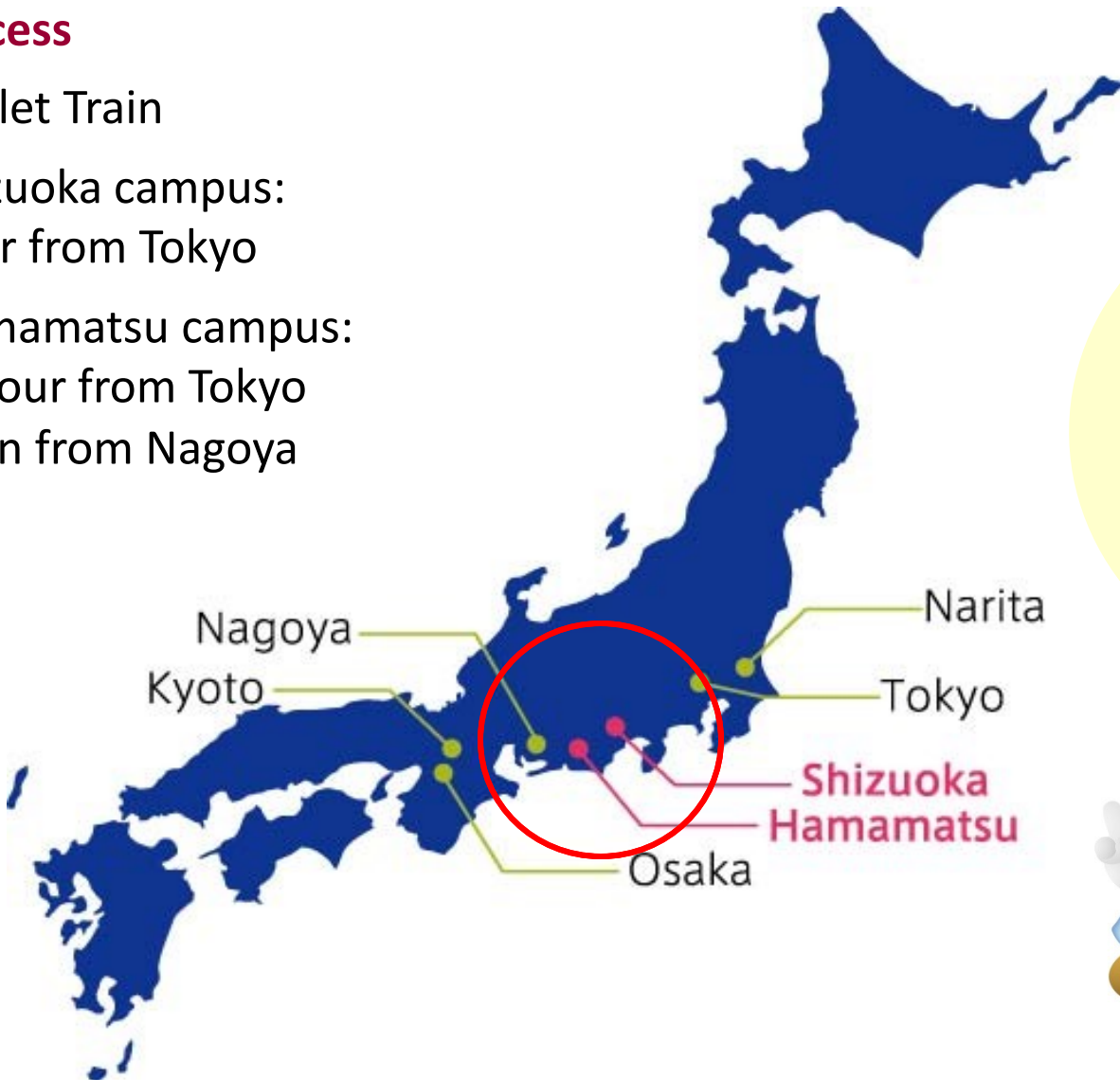
# Where we are

## ■ Access

By Bullet Train

○ Shizuoka campus:  
1 hour from Tokyo

○ Hamamatsu campus:  
1.5 hour from Tokyo  
30min from Nagoya



We are located in the heart of Japan !



Campus Mascot (Shizuppi)





## View from Shizuoka campus

Mt. Fuji is the highest mountain in Japan and is sometimes called, “the Sacred Mt. Fuji”. It is 3,776 meters(12,388feet) in height. Mt.Fuji was recognized as a World Cultural Heritage site in 2013.



# Shizuoka Campus





# Shizuoka campus

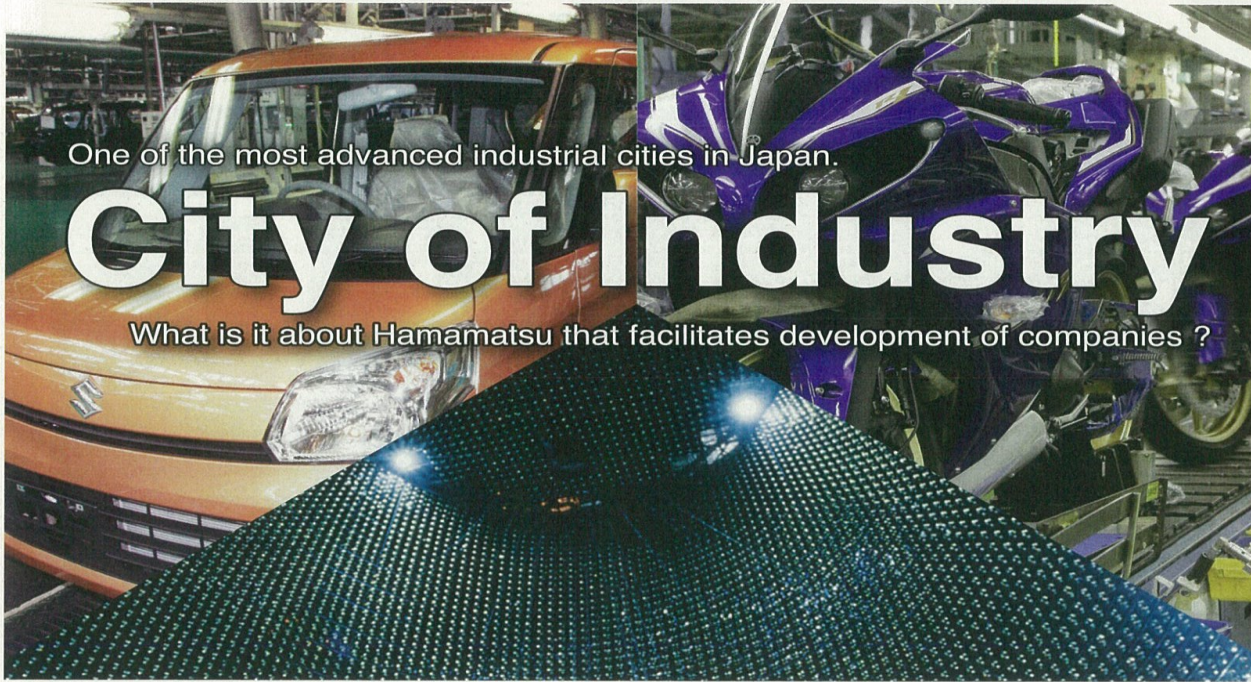


# Hamamatsu Campus





# Shizuoka is Industrial region



One of the most advanced industrial cities in Japan.

# City of Industry

What is it about Hamamatsu that facilitates development of companies ?

## International Enterprises from Hamamatsu



All the factors necessary for business growth are *present* in Hamamatsu.

### The Best Location



Hub for Technologically Advanced Small-to-Medium-Sized Manufacturing Companies.

A hub of technologically advanced enterprises that can meet the cost, timing, and quality of demands of major manufacturers.

### Pioneering Sprits Called Yaramaica



Under the Yaramaica spirit of the

# Ultracompact Satellite developed by the Faculty of Engineering





# Racing Car Developed by Students





国立大学法人

静岡大学

National University Corporation

Shizuoka University

## ■ CONTACT

Shizuoka University

Organization for International Collaboration

E-mail: [global@adb.shizuoka.ac.jp](mailto:global@adb.shizuoka.ac.jp)